



<p><b>RESTORATION OF COMPOSITE PAVEMENT</b></p>	<p><b>RESTORATION OF CONCRETE PAVEMENT</b></p>	<p><b>ALLEY-DRIVEWAY ENTRANCE WITH CURB RETURNS TYPE "A"</b></p>
<p>DATE: 8/20/15          REVISION: APPROVAL: <i>Adit Rij</i>          APPROVED: <i>Muhammad Khalid</i>          DISTRICT OF COLUMBIA DEPARTMENT OF TRANSPORTATION          COMPOSITE PAVEMENT RESTORATION UTILITY LINES - 1          DWS NO. 215.81</p>	<p>DATE: 8/20/15          REVISION: APPROVAL: <i>Adit Rij</i>          APPROVED: <i>Muhammad Khalid</i>          DISTRICT OF COLUMBIA DEPARTMENT OF TRANSPORTATION          CONCRETE PAVEMENT RESTORATION UTILITY LINES - 2          DWS NO. 215.82</p>	<p>DATE: 8/20/15          REVISION: APPROVAL: <i>Adit Rij</i>          APPROVED: <i>Muhammad Khalid</i>          DISTRICT OF COLUMBIA DEPARTMENT OF TRANSPORTATION          ALLEY-DRIVEWAY ENTRANCE WITH CURB RETURNS TYPE "A"          DWS NO. 504.31</p>

**TYPICAL SIDEWALK SECTIONS**

NOTES:  
 1. STANDARD TRANSVERSE SLOPE OF SIDEWALK IS 2% TOWARD CURB.  
 2. ALL SIDEWALKS SHALL HAVE A MINIMUM WIDTH OF 5 FT. 6 IN. FROM THE CENTER OF A 6" DIA. TREE TO THE CENTER OF THE OTHER SIDE. THE CENTER OF A 6" DIA. TREE SHALL BE 1.5 FT. FROM THE EDGE OF THE SIDEWALK. THE MINIMUM CLEAR WIDTH OF SIDEWALK SHALL BE 4 FT. TO ALLOW FOR WHEELCHAIR PASSAGE.  
 3. WHEN MINIMUM SIDEWALK WIDTH REQUIREMENTS ARE MET, A 200# REINFORCING SHALL BE PROVIDED BY THE FRONT OF EACH ALLEYS.  
 4. ANY EXPANSION JOINTS SHALL BE PROVIDED BY THE FRONT OF EACH ALLEYS.  
 5. PROVIDE AT A MINIMUM THE REQUIRED TREE SOIL VOLUME PER TREE OPEN AREA/STANDARD.

DATE: 8/20/15  
 REVISION: APPROVAL: *Adit Rij*  
 APPROVED: *Muhammad Khalid*  
 DISTRICT OF COLUMBIA DEPARTMENT OF TRANSPORTATION  
 DWS NO. 605.01

**TYPES OF GRANITE CURBS**

NOTES:  
 1. CONDITIONS AT BACK OF CURB VARY AND ARE AS SHOWN ON THE CONTRACT PLANS.  
 2. PCC JOINTS SHALL BE PER DOT STANDARD SPECIFICATIONS. SECTION 215.05 SHALL MAINTAIN THE SAME TIME LIMITS AS PCC AND SHALL BE WATERED DOWN AND SETTING OF GRANITE CURBS.  
 3. GRANITE CURBS ARE SHOWN WITH A COMPOSITE PAVEMENT SECTION.  
 4. MIN. L.S. = 1% IN. PER FT. TOWARD CURB.  
 5. MIN. S.S. = 1% IN. PER FT. AWAY FROM CURB.  
 6. A 2 IN. MIN. LAYER OF GRADED AGGREGATE BASE SHALL BE PLACED BENEATH THE GRANITE AND CURB AND GUTTER AND IS NOT SHOW FOR CLARITY.

DATE: 8/20/15  
 REVISION: APPROVAL: *Adit Rij*  
 APPROVED: *Muhammad Khalid*  
 DISTRICT OF COLUMBIA DEPARTMENT OF TRANSPORTATION  
 DWS NO. 605.02

**PATTERNS FOR BRICK GUTTER**

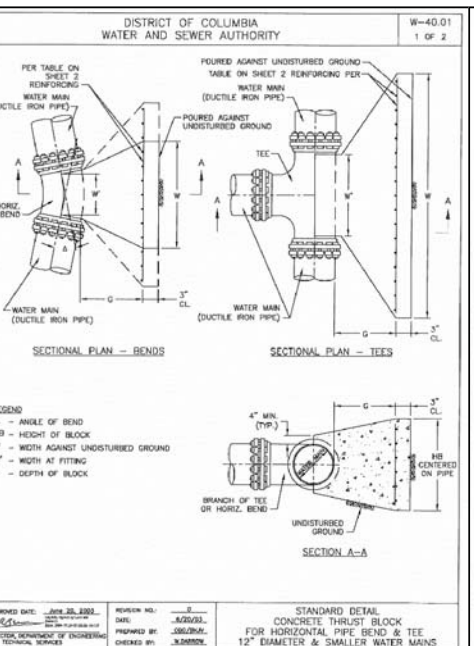
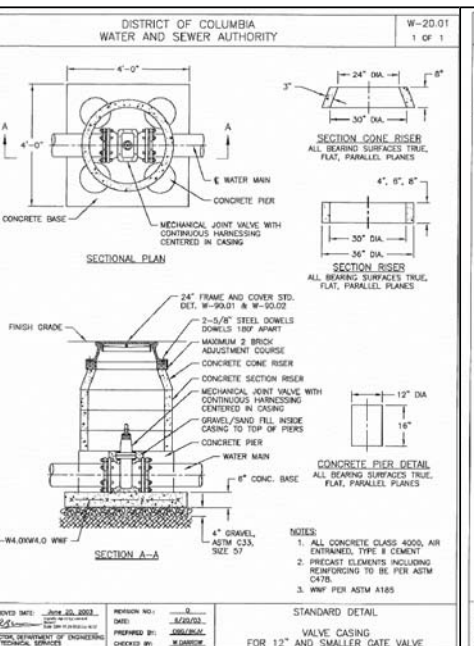
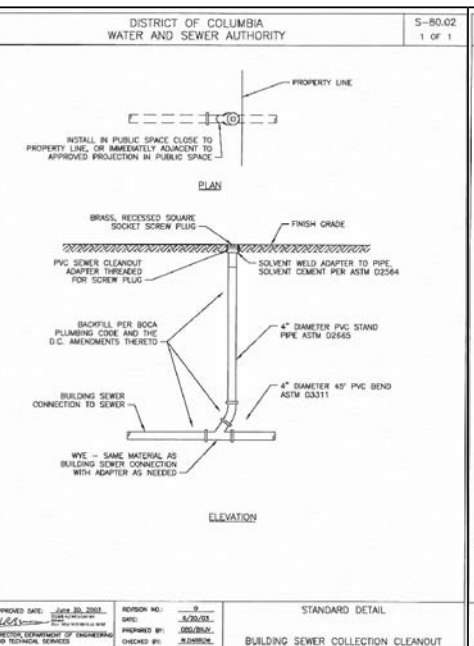
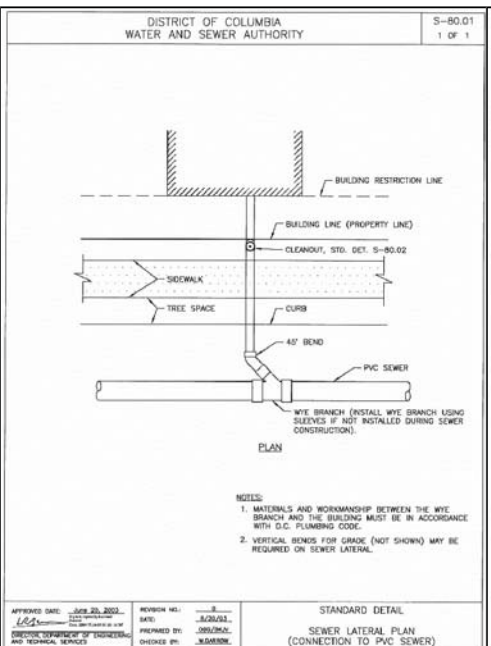
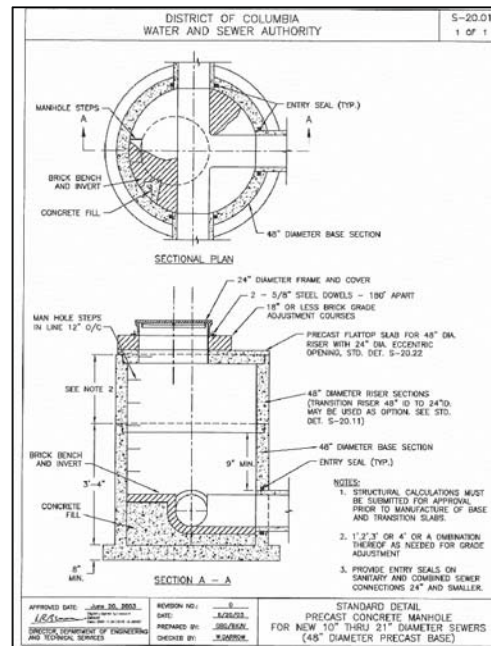
NOTES:  
 1. EXPANSION JOINTS AS DESCRIBED IN THE DOT STANDARD SPECIFICATIONS SHALL MAINTAIN THE SAME TIME LIMITS AS PCC AND SHALL BE WATERED DOWN AFTER SETTING OF GRANITE CURB.  
 2. FOR GUTTER WIDTHS LESS THAN 4" THE MIN. AND 2" TO INCREASE THE WIDTH OF THE JOINT AT SPECIFICATIONS AS SPECIFIED IN THE DOT STANDARD SPECIFICATIONS. SECTION 215.05 SHALL MAINTAIN THE SAME TIME LIMITS AS PCC AND SHALL BE WATERED DOWN AFTER SETTING OF GRANITE CURB.  
 3. PERFORMED EXPANSION JOINT FOR FULL DEPTH OF BRICK BUTTER. TYPICAL PCC BASE AT JOINTS AS SPECIFIED IN THE DOT STANDARD SPECIFICATIONS. SECTION 215.05 SHALL MAINTAIN THE SAME TIME LIMITS AS PCC AND SHALL BE WATERED DOWN AFTER SETTING OF GRANITE CURB.  
 4. MIN. L.S. = 1% IN. PER FT. TOWARD CURB.  
 5. MIN. S.S. = 1% IN. PER FT. AWAY FROM CURB.  
 6. A 2 IN. MIN. LAYER OF GRADED AGGREGATE BASE SHALL BE PLACED BENEATH THE GRANITE AND CURB AND GUTTER AND IS NOT SHOW FOR CLARITY.

DATE: 8/20/15  
 REVISION: APPROVAL: *Adit Rij*  
 APPROVED: *Muhammad Khalid*  
 DISTRICT OF COLUMBIA DEPARTMENT OF TRANSPORTATION  
 DWS NO. 605.04

**CURB RAMP DETAILS**

NOTES:  
 1. THE SURFACE OF THE PCC RAMP SHALL BE BROOM FINISH (DOTF. 215.05).  
 2. ALL RAMPS SHALL CONFORM TO DOT BEST PRACTICES AND THE LATEST CHANGING WITH GRANULES AND TYP. OPENING.

DATE: 8/20/15  
 REVISION: APPROVAL: *Adit Rij*  
 APPROVED: *Muhammad Khalid*  
 DISTRICT OF COLUMBIA DEPARTMENT OF TRANSPORTATION  
 DWS NO. 605.06



DISTRICT OF COLUMBIA WATER AND SEWER AUTHORITY

W-40.01  
2 OF 2

BRANCH OF TEE OR PIPE DIA TYPE	BEND TYPE	W	H <sub>B</sub>	W'	C	REIN. (E.W.)
6"	11.25'	1'-8"	1'-8"	0'-8"	1'-0"	#4 @12"
	22.5'	1'-0"	1'-8"	0'-8"	1'-0"	#4 @12"
	33.75'	2'-0"	2'-0"	0'-8"	1'-0"	#4 @12"
	45.0'	2'-0"	2'-0"	0'-8"	1'-0"	#4 @12"
8"	11.25'	1'-8"	1'-8"	0'-8"	1'-0"	#4 @12"
	22.5'	1'-0"	1'-8"	0'-8"	1'-0"	#4 @12"
	33.75'	2'-0"	2'-0"	0'-8"	1'-0"	#4 @12"
	45.0'	2'-0"	2'-0"	0'-8"	1'-0"	#4 @12"
12"	11.25'	2'-8"	2'-8"	1'-0"	1'-0"	#4 @12"
	22.5'	3'-8"	2'-8"	1'-0"	1'-0"	#4 @12"
	33.75'	4'-8"	3'-8"	1'-4"	1'-4"	#4 @12"
	45.0'	7'-0"	4'-8"	1'-4"	1'-4"	#4 @12"

APPROVED DATE: June 20, 2002

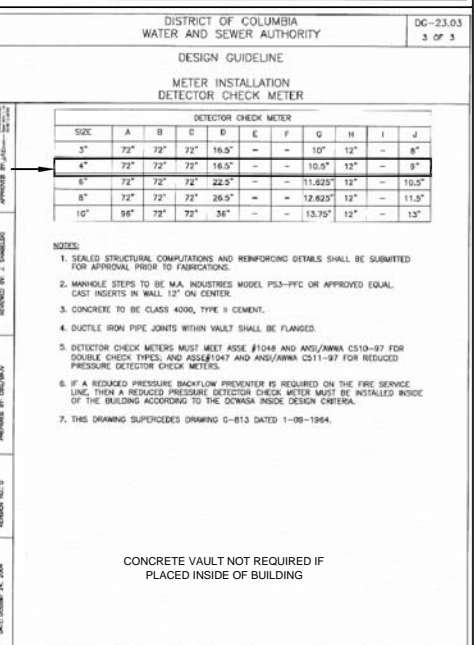
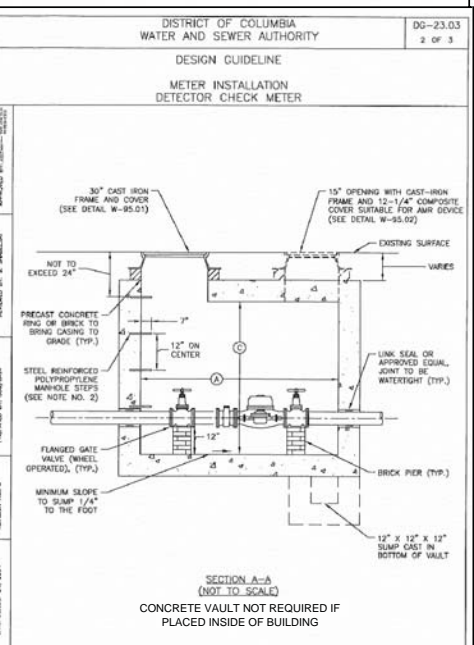
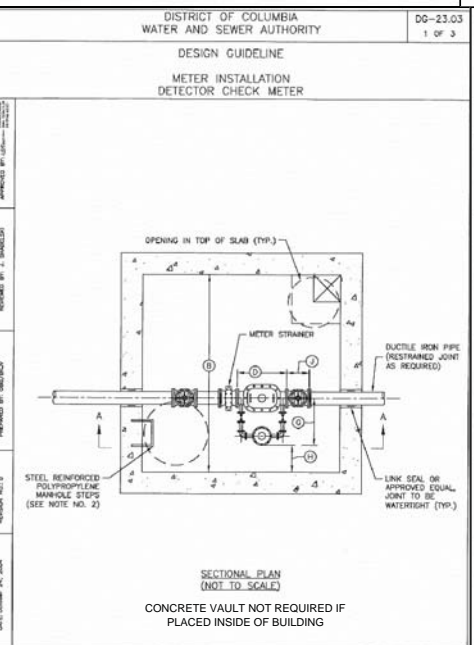
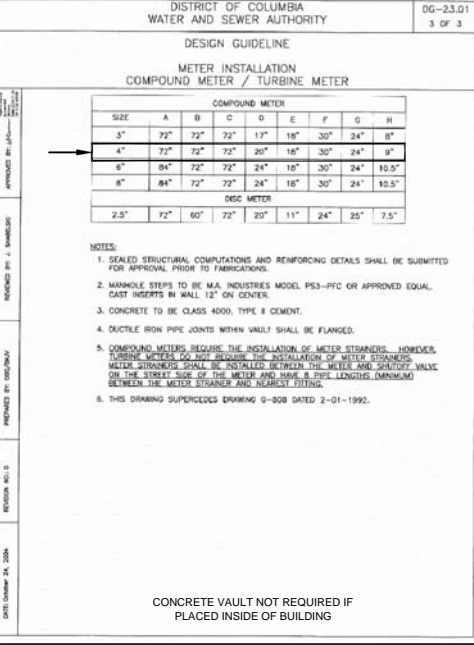
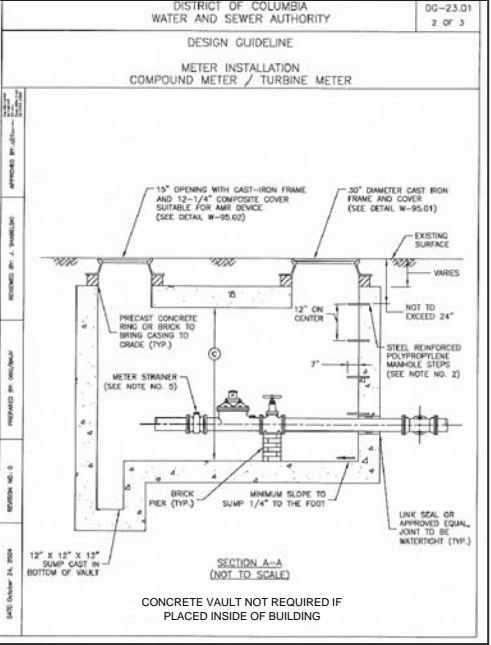
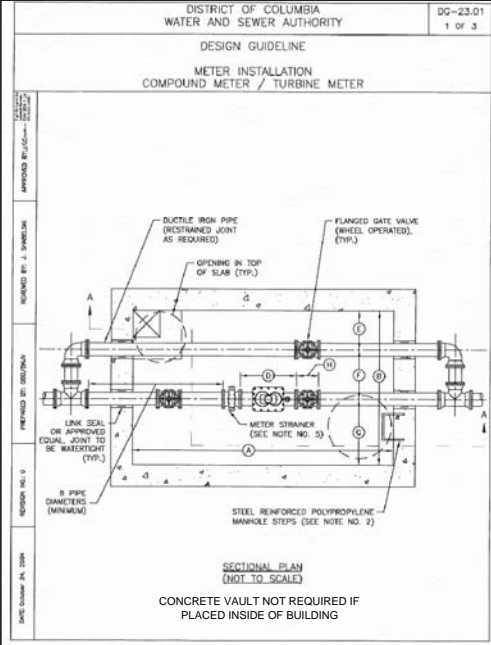
REVISION NO. 1

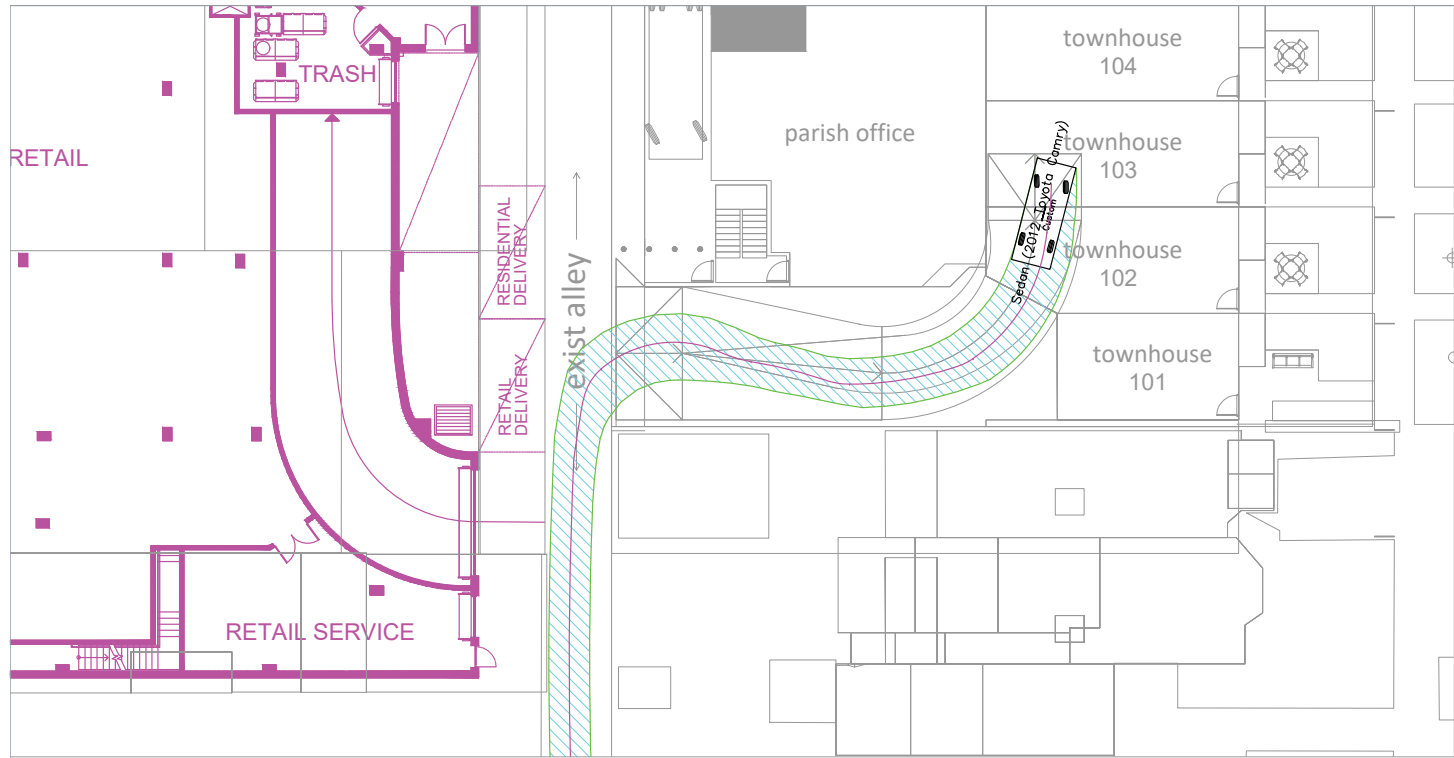
DATE: 6/20/02

DESIGNED BY: J. JARVIS

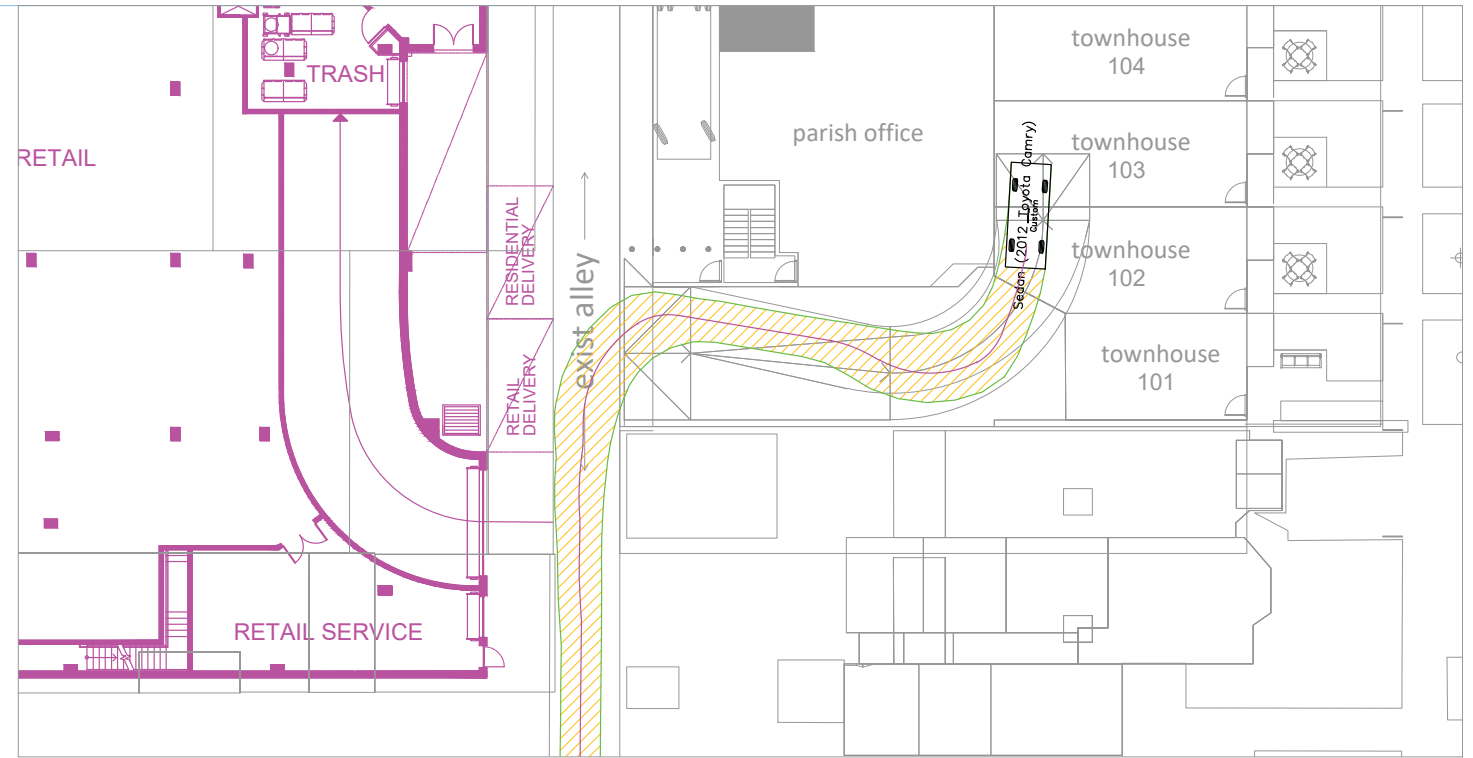
CHECKED BY: J. JARVIS

STANDARD DETAIL CONCRETE THRUST BLOCK FOR HORIZONTAL PIPE BEND & TEE 12" DIAMETER & SMALLER WATER MAINS

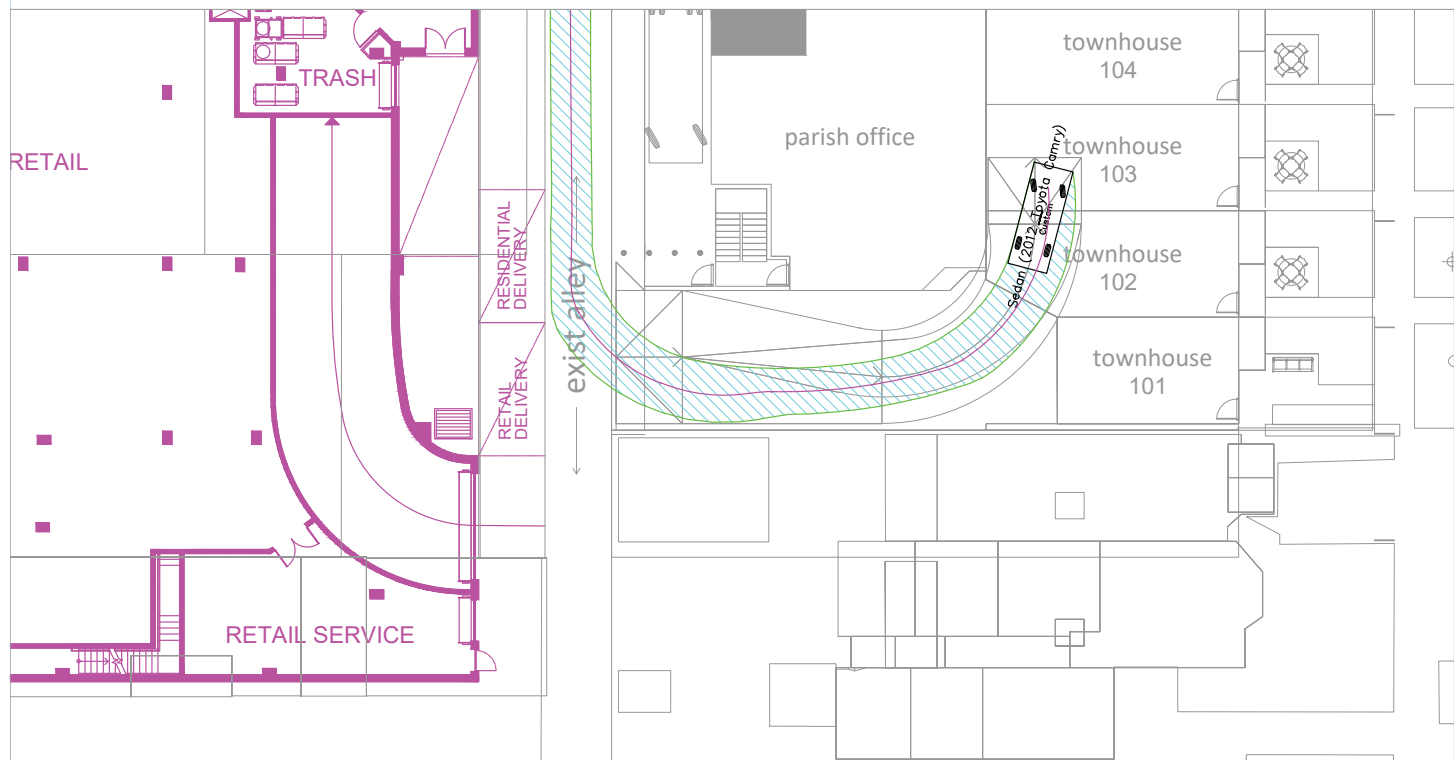




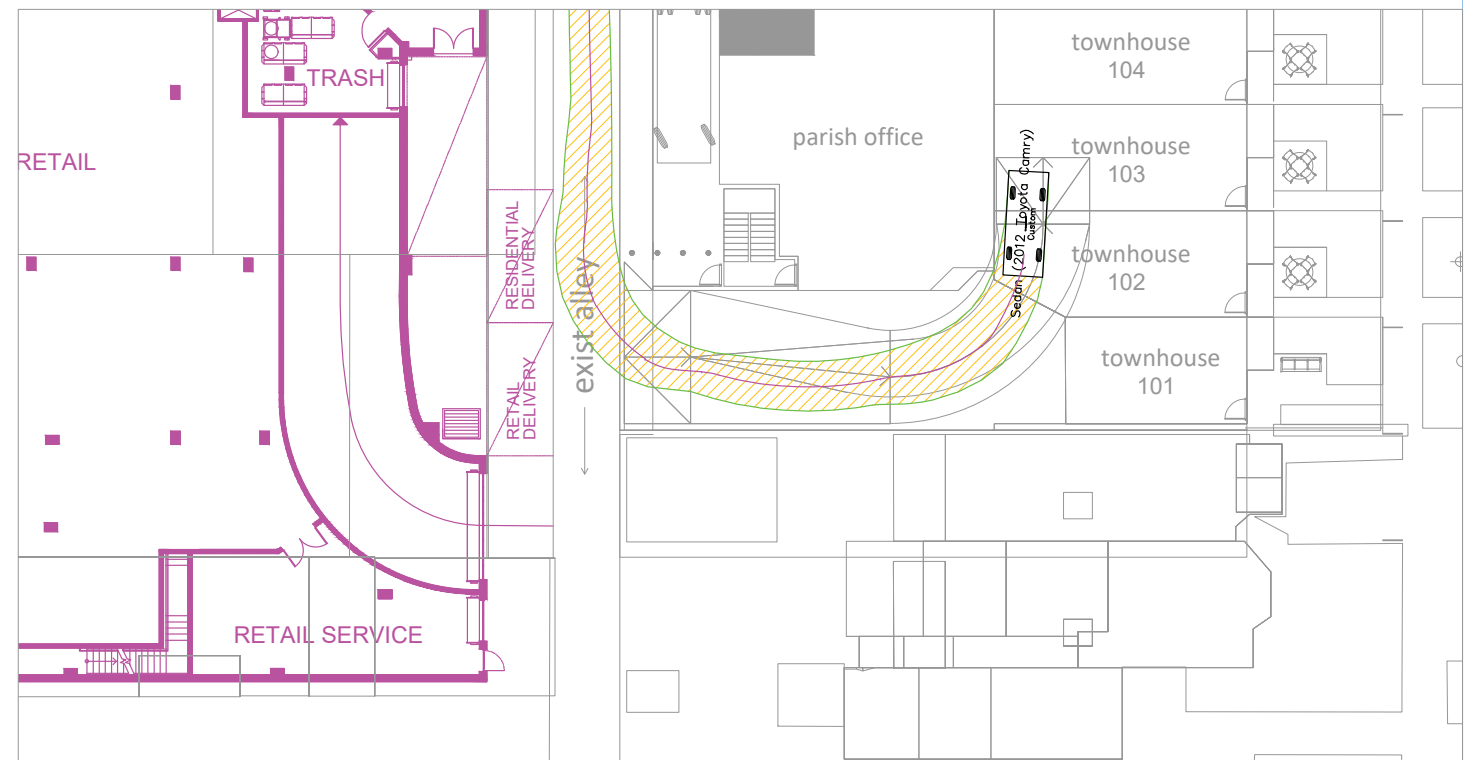
Toyota Camry: Southern Approach Inbound



Toyota Camry: Southern Approach Outbound



Toyota Camry: Northern Approach Inbound



Toyota Camry: Northern Approach Outbound

